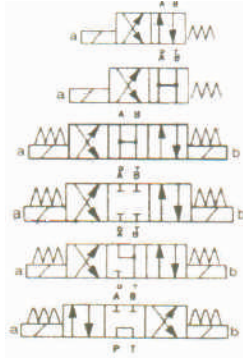




## Body ISO 02

## HİDROLİK YÖN VALFLERİ NG6



Kod	Q Max.(l/min.)	P Max.(bar)	Size
HD2-ES-1LL	30	320	ISO 02
HD2-ES-0ML	30	320	ISO 02
HD2-ES-0C	30	320	ISO 02
HD2-ES-1C	30	320	ISO 02
HD2-ES-3C	30	320	ISO 02
HD2-ES-4C	30	320	ISO 02

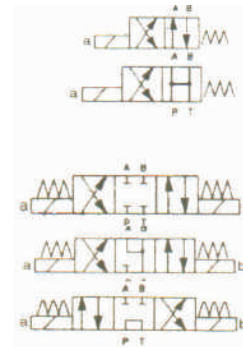
## Bobin



Kod		Voltage
B02-012C	ISO 02	12V DC
B02-024C	ISO 02	24V DC
Kod		Voltage
B02-115A	ISO 02	115V AC
B02-230A	ISO 02	230V AC



## Body ISO 03 (Coils 02)



Kod	Q Max.(l/min.)	P Max.(bar)	Size
HD3-E2-1LL	40	250	ISO 03
HD3-E2-0ML	40	250	ISO 03
HD3-E2-0C	40	250	ISO 03
HD3-E2-1C	40	250	ISO 03
HD3E2-3C	40	250	ISO 03
HD3-E2-4C	40	250	ISO 03

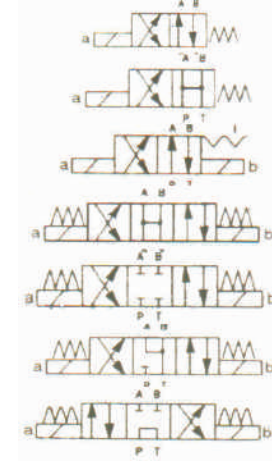
## Bobin



Kod		Voltage
B02-012C	ISO 02	12V DC
B02-024C	ISO 02	24V DC
Kod		Voltage
B02-115A	ISO 02	115V AC
B02-230A	ISO 02	230V AC

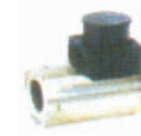


## HİDROLİK YÖN VALFLERİ NG6

Body ISO 03  
(Coils 03)

Kod	Q Max.(l/min.)	P Max.(bar)	Size
HD3-ES-1LL	60	320	ISO 03
HD3-ES-0ML	60	320	ISO 03
HD3-ES-1N	60	320	ISO 03
HD3-ES-0C	60	320	ISO 03
HD3-ES-1C	60	320	ISO 03
HD3-ES-3C	60	320	ISO 03
HD3-ES-4C	60	320	ISO 03

## Bobin



Kod		Voltage
B03-012C	ISO 03	12V DC
B03-024C	ISO 03	24V DC
B03-115A	ISO 03	115V AC
Kod		Voltage
B03-230A	ISO 03	230V AC
B03-110R	ISO 03	115V RAC(*)
B03-220R	ISO 03	230V RAC(*)

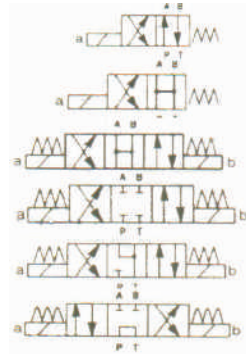
Electrovalve fiyatı= Gövde+bobin fiyatıdır

Örnek : Çift bobin valf ISO 03 + 24V DC bobin : HD3-ES+2x B03-024C = 99,00 Euro 2 x 15,00 Euro = 129,00 Euro total



## HİDROLİK YÖN VALFLERİ NG10

Body ISO 05



Kod	Q Max.(l/min.)	P Max.(bar)	Size
HD5-ES-1LL	140	350	ISO 05
HD5-ES-0ML	140	350	ISO 05
HD5-ES-0C	140	350	ISO 05
HD5-ES-1C	140	350	ISO 05
HD5-ES-3C	140	350	ISO 05
HD-ES-4C	140	350	ISO 05

Bobin



Kod	ISO 05	Voltage
B05-012C	ISO 05	12V DC
B05-024C	ISO 05	24V DC

Kod	ISO 05	Voltage
B05-115A	ISO 05	115V AC
B05-230A	ISO 05	230V AC

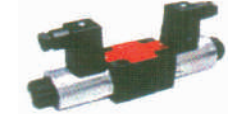
ISO 4400 soket (Ref.Az-100)



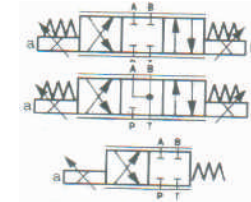
Kod	Cable Connection	Poles	Max Conductor Section
KA-132000B1	PG 11 (8-11mm.)	2+G	3*1,5mm <sup>2</sup> .

Kod	Circuit	Poles	Input Voltage (V)	Colour
KA-132D54T1	Diode+yellow LED	2+G	12-24 DC	Transparent
KA-132R12B1	Current Rectifier	2+G	115 AC	Black
KA-13R13B1	Current Rectifier	2+G	230AC	Black
KA-132L34T1	Bipolar yellow LED	2+G	12-24 AC/DC	Transparent
KA-132L35T1	Bipolar yellow LED	2+G	115 AC/DC	Transparent
KA-132L36T1	Bipolar yellow LED	2+G	230AC/DC	Transparent
KA-132V54T1	Varistor +yellow LED	2+G	12-24 AC/DC	Transparent

## ORANSAL YÖN KONTROL VALFLERİ



ISO 03 4 WAY CONTROL

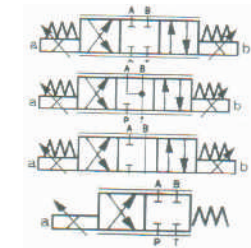


Kod	Q Nom.(l/min.)	P Max.(bar)	Size
HD3-P-1PC	32	320	ISO 03
HD3-PS-3PC	32	320	ISO 03
HD3-PS-1PML	32	320	ISO 03

NEW

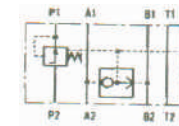


ISO 05 4 WAY CONTROL



Kod	Q Nom.(l/min.)	P Max.(bar)	Size
HD5-PS-1PC	60	320	ISO 05
HD5-PS-3PC	60	320	ISO 05
HD5-PS-7PC	60	320	ISO 05
HD5-PS-1PML	60	320	ISO 05

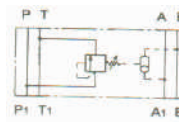
PRESSURE COMPENSATOR VALVES



Kod	Control	P Max.(bar)	Ports
AM3-PC-P	P port (p=10bar)	320	ISO 03



3-WAY LOAD SENSING



Kod	Control	P Max.(bar)	Ports
AM3-LS-P3	P port (p=5/40bar)	320	ISO 03



Available on request pressure compensator valves with ISO 05 interface

(2-way AM5-PC-P and 3-way load sensing AM5-LS-P3)

ELECTRONIC DRIVERS for HD\*-PS proportional valves

WIRED STRIP BOX

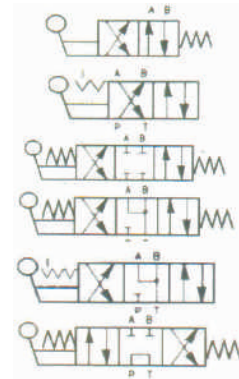


Kod	V supply
UED-M15-01	10-28 Vcc. 1channel (monosolenoid)
UED-M15-05	10-28 Vcc. (bisolenoid)

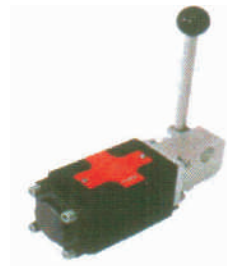


ISO 02

## MANUEL (KOL) KONTROLLU VALFLER NG6

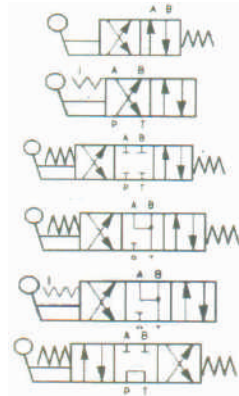


Kod	Q Nom.(l/min.)	P Max.(bar)	Size
HD2-L0-1LL	30	320	ISO 02
HD2-L0-1N	30	320	ISO 02
HD2-L0-1C	30	320	ISO 02
HD2-L0-3C	30	320	ISO 02
HD2-L0-3D	30	320	ISO 02
HD2-L0-4C	30	320	ISO 02



ISO 03

## MANUEL (KOL) KONTROLLU VALFLER NG10



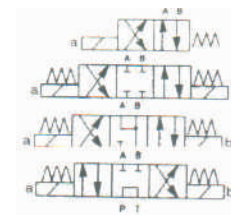
Kod	Q Nom.(l/min.)	P Max.(bar)	Size
HD3-L0-1LL	60	320	ISO 03
HD3-L0-1N	60	320	ISO 03
HD3-L0-1C	60	320	ISO 03
HD3-L0-3C	60	320	ISO 03
HD3-L0-3D	60	320	ISO 03
HD3-L0-4C	60	320	ISO 03

## EXPROOF PİLOT KONTROL YÖN VALFLERİ



ISO 03

Class:II 2GD Eex dll C T5(\*)

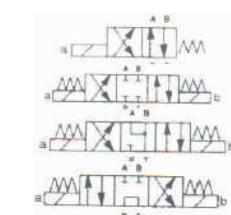


Kod	Q Nom.(l/min.)	P Max.(bar)	Size
HD3-EX-1LL	32	250	ISO 03
HD3-EX-1C	32	250	ISO 03
HD3-EX-3C	32	250	ISO 03
HD3-EX-4C	32	250	ISO 03



ISO 05

Class:II 2GD Eex dll C T5(\*)

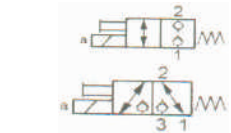


Kod	Q Nom.(l/min.)	P Max.(bar)	Size
HD5-EX-1LL	150	250	ISO 05
HD5-EX-1C	150	250	ISO 05
HD5-EX-3C	150	250	ISO 05
HD5-EX-4C	150	250	ISO 05

## EXPROOF PİLOT KONTROL YÖN VALFLERİ (Screw in Type)



Class:II 2GD Eex dll C T5(\*)



Kod	Q Nom.(l/min.)	P Max.(bar)	Cavity
EVX-06-C5	25	250	M22
EVX-06-D5	25	250	M22

All prices mentioned above are for solenoid valves complete with DC coils (12V or 24V).

Atex solenoids come as standard with manual override, by pushing of the emergency pin

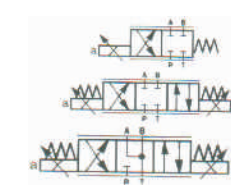
Coils for Ac current (115V or 230V), including a current rectifier circuit, are available with price difference of +20,00 Euro (each coil)



## PROPORTIONAL (Oransal) - EXPROOF PİLOT KONTROL YÖN VALFLERİ

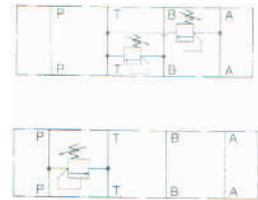
ISO 03

Class:II 2GD Eex dll C T5(\*)



Kod	Q Nom.(l/min.)	P Max.(bar)	Size
HD3-PX-1LL	32	250	ISO 03
HD3-PX-1PC	32	250	ISO 03
HD3-PX-3PC	32	250	ISO 03

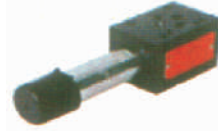



**RELIEF VALVES (STACKABLE TYPE)**  
**DIRECT ACTING**


Kod	Function	Q Nom.(l/min.)	P Max.(bar)	Size
AM2-MO-BA/20	max=)A-B to T	20	80 to 210	ISO 02
AM3-MO-BA/20	max=)A-B to T	32	40 to 250	ISO 03
AM5-MP-BA/20	max=)A-B to T	100	20 to 210	ISO 05
AM2-MO-P/20	max=)P to T	20	80 to 210	ISO 02
AM3-MO-P/20	max=)P to T	32	40 to 250	ISO 03
AM5-MP-P/20	max=)P to T	100	20 to 210	ISO 05


**PRESSURE REDUCING VALVES (STACKABLE TYPE)**  
**DIRECT ACTING**


Kod	Function	Q Nom.(l/min.)	P Max.(bar)	Size
AM2-RO-P/16	reduct.=)P	20	10 to 200	ISO 02
AM3-RO-C-P/6,3	reduct.=)P	20	10 to 70	ISO 03
AM3-RO-P/25	reduct.=)P	40	60 to 250	ISO 03


**PILOT OPERATED**


Kod	Function	Q Nom.(l/min.)	P Max.(bar)	Size
AM2-RP-P/20	reduct.=)P	40	10 to 210	ISO 03
AM3-RP-BC/20	reduct.=)B	40	10 to 210	ISO 03

**CHECK VALVES (STACKABLE TYPE)**  
**DIRECT ACTING**


Kod	Function	Q Max.(l/min.)	P Max.(bar)	Size
AM3-CO-P/34	check on P	40	320	ISO 03

**PILOT OPERATED**

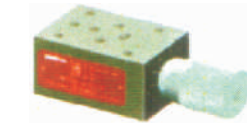

Kod	Function	Q Max.(l/min.)	P Max.(bar)	Size
AM2-CP-AB	check on A,B	24	320	ISO 02
AM3-CP-AB	check on A,B	50	320	ISO 03
AM5-CP-AB	check on A,B	100	320	ISO 03


**DEBI AYAR VALFLERİ (CHECKLI)**
**Direkt Uygulamalı**


Kod	Function	Q Max.(l/min.)	P Max.(bar)	Size
AM2-FC-AB	meter-out A,B	24	320	ISO 02
AM3-FC-AB	meter-out A,B	50	320	ISO 03
AM5-FC-AB	meter-out A,B	100	320	ISO 05



AM3-FX-AB	meter-in A,B	50	320	ISO 03
-----------	--------------	----	-----	--------


**3-yollu basınç kompanseörlü valfler**


Kod	Function	Q Max.(l/min.)	P Max.(bar)	Size
AM3-Q3-P/16	control on P	16	320	ISO 03


**By-Pass sol.Valfler (Flow control valves QVC-06)**
**Direkt uygulamalı**


Kod	Function	Q Nom.(l/min.)	P Max.(bar)	Size
AM3-DQ-AC-**	Normally closed Meter-out A	32	250	ISO 03
AM3-DQ-PC-**	Normally closed Meter-in P	32	250	ISO 03


**2-yollu basınç kompanseörlü valfler**


Kod	Q Max.regulated	Q Max.free	P Max.(bar)	Size
QVC-06/16	16 l/min.	32 l/min.	320	ISO 03
QVC-06/32	32 l/min.	32 l/min.	320	ISO 03

**SCREW-IN 2-WAY SOLENOID OPERATED VALVES (POPPET TYPE)**  
 N.C. 1-DIR.FLOW

Kod	Q Nom.(l/min.)	P Max.(bar)	Cavity
EVC.34.03	32	250	3/4"-16 UNF
EVSC.34.02	32	250	3/4"-16 UNF

## N.C. 2-DIR.FLOW

Kod	Q Nom.(l/min.)	P Max.(bar)	Cavity
EVC2.34.03	32	250	3/4"-16 UNF
EVC2.34.04	32	250	3/4"-16 UNF

## N.C. 2-DIR.FLOW

Kod	Q Nom.(l/min.)	P Max.(bar)	Cavity
EVD.34.04	10	250	3/4"-16 UNF
EVD2.34.04	16	210	3/4"-16 UNF

## N.O. 1-DIR.FLOW

Kod	Q Nom.(l/min.)	P Max.(bar)	Cavity
EVO.34.03	20	250	3/4"-16 UNF

**SCREW-IN SOLENOID OPERATED VALVES (SPOOL TYPE)**  
 2-WAY

Kod	Q Max.(l/min.)	P Max.(bar)	Cavity
EV2C.34.03	20	250	3/4"-16 UNF
EV20.34.03	20	250	3/4"-16 UNF

## 3-WAY

Kod	Q Max.(l/min.)	P Max.(bar)	Cavity
EV3C.34.03	20	250	3/4"-16 UNF
EV30.34.03	20	250	3/4"-16 UNF

## 4-WAY

Kod	Q Max.(l/min.)	P Max.(bar)	Cavity
EV4CX.34.03	20	250	3/4"-16 UNF
EV4PX.34.03	20	250	3/4"-16 UNF

## COILS for EV\*\*.34 screw-in solenoid operated valves

Kod	Voltage-Absorbiton
C30-012C	12V DC-18W
C30-024C	24V DC-18W
C30-220R	230V RAC(*)-18W

## C30 suitable for EVC,EVO valve types

Kod	Voltage-Absorbiton
C36-012C	12V DC-22W
C36-024C	24V DC-22W
C36-220R	230V RAC(*)-22W

## C36 suitable for EVD,EV2,EV3,EV4 valve types

**SCREW-IN 2-WAY MANUAL OPERATED VALVES (POPPET TYPE)**  
 N.C. 1-DIR.FLOW

Kod	Q Max.(l/min.)	P Max.(bar)	Cavity
VEM-34-NC/20	20	350	3/4"-16 UNF

**SCREW-IN CHECK VALVES (POPPET TYPE) direkt flow**

Kod	Q Nom.(l/min.)	P Max.(bar)	Cavity
VUC-34	32	320	3/4"-16 UNF

**SCREW-IN RELIEF VALVES direkt**

Kod	Q Max.(l/min.)	Press.range(bar)	Cavity
MO-010	16	250 to 250	3/4"-16 UNF
MO-020/10	25	30 to 125	3/4"-16 UNF
MO-020/20	25	63 to 200	3/4"-16 UNF
MO-020/32	25	125 to 350	3/4"-16 UNF
MO-3/10	32	25 to 125	M20*1,5
MO-3/20	32	40 to 250	M20*1,5
MO-3/32	32	100 to 320	M20*1,5
MO-4/10	50	20 to 130	7/8"-14 UNF
MO-4/16	50	40 to 180	7/8"-14 UNF
MO-4/32	50	60 to 350	7/8"-14 UNF

**1-WAY FLOW CONTROL VALVES (SCREW-IN TYPE) throttle adj.**

Kod	Q Max.(l/min.)	P Max.(bar)	Cavity
FT 266/5-34	20	250	3/4"-16 UNF

**2-WAY FLOW CONTROL VALVES (SCREW-IN TYPE) throttle adj.**

Kod	Q Max.(l/min.)	P Max.(bar)	Cavity
VCF-34	16	250	3/4"-16 UNF
FT 266/2-34	20	250	3/4"-16 UNF

**FIXED-PRESS.COMPENS.**

Kod	Q Max.(l/min.)	P Max.(bar)	Cavity
VQF-34/**	(**)1 to 12	250	3/4"-16 UNF

**PRESS.COMP.-ADJUST.**

Kod	Q Max.(l/min.)	P Max.(bar)	Cavity
FT 268/2-34	20	250	3/4"-16 UNF

**2-WAY VALVES**

Kod	Cavity	Ports	Material
LAB-34-2/14	3/4"-16 UNF	1/4"BSP	Aluminium
LAB-34-2/38	3/4"-16 UNF	3/8" BSP	Aluminium

**3-WAY VALVES**

Kod	Cavity	Ports	Material
LAB-34-3/38	3/4"-16 UNF	3/8"BSP	Aluminium

**4-WAY VALVES**

Kod	Cavity	Ports	Material
LAB-34-4/38	3/4"-16 UNF	3/8"BSP	Aluminium





MINI POWER PACK SCLA (basic execution)

Kod sampling	Reservoir	Gear pumps available	DC motors available
SCLA-02-S-11-1216	2,5 litres (02)	11=1,1 cm3/rev. 16=1,6 cm3/rev. 27=2,7 cm3/rev.	1216 =12V DC 1,6 kW with starter
SCLA-05-S-27-2422	5 litres (05)	42=4,2 cm3/rev.	2422=24V DC 2,2 kW with starter
SCLA-08-S-58-2422	8 litres (08)	58=5,8 cm3/rev.	

Assembly and test included in the price. Possible all combinations among pumps and motors available, without price difference.

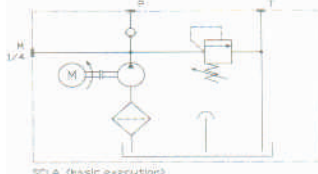
Mini power packs type SCLA come ready to be combined with HDF\*/AMF valves (see next page).

ACCESSORIES



Kod	Description
AMF-HP2	Hand pump 2cm3/stroke (ref.AA-400)
PSC	Mounting foot + screws
PD1-PT	Starting plate with P and T ports, thread 1/4" BSP

NEW



AMF-SE MODULES for SIMPLE ACTING OF CYLINDERS

BLOCK+VALVES

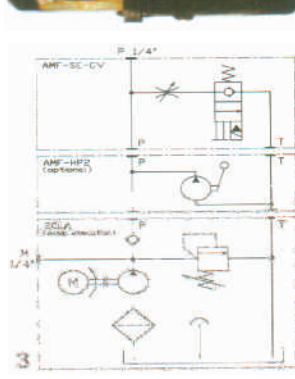
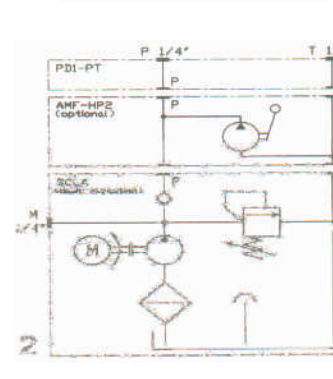
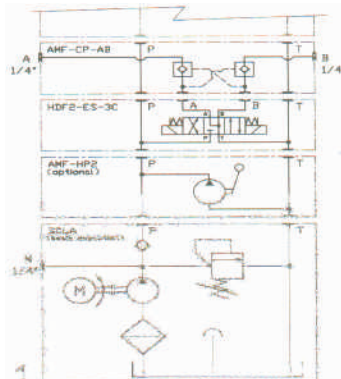


Kod	Flow regulator type
AMF-SE-CV-**	Throttle adjustable
AMF-SE-Q1-**	Fixed flow 1l/min, pressure compensated
AMF-SE-Q2-**	Fixed flow 2l/min, pressure compensated
AMF-SE-Q4-**	Fixed flow 4l/min, pressure compensated
AMF-SE-QV-**	Throttle adjustable, pressure compensated

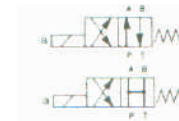
\*\* spersifit: solenoid valve tension. 12=12V DC, 24=24V DC

STANDARD ASSAMBLIES

1=)	Direct assembly of HDF/HDF2 electrovalves and AMF modules. Assembly cost must be considered as 10% of net price of each single component added to SCLA basic execution
2=)	Starting P-T lines (1/4"BSP) for generic hydraulic power supply (remote by hoses)
3=)	Starting AMF-SE plates for simple acting cylinders



SOLENOID OPERATED STACKABLE VALVES-DIRECTIONAL CONTROL (Body HDF)



Kod	Q Nom.(l/min.)	P Max.(bar)	Ports
HDF-ES-1LL	20	250	A,B:1/4" BSP P,T:3/8" BSP
HDF-ES-OML	20	250	A,B:1/4" BSP P,T:3/8" BSP
HDF-ES-OC	20	250	A,B:1/4" BSP P,T:3/8" BSP
HDF-ES-1C	20	250	A,B:1/4" BSP P,T:3/8" BSP
HDF-ES-3C	20	250	A,B:1/4" BSP P,T:3/8" BSP
HDF-ES-4C	20	250	A,B:1/4" BSP P,T:3/8" BSP

For mutual use, with standard stackable feature up to 8 valve bodies (A,B port on top)

Body HDF2



Kod	Q Nom.(l/min.)	P Max.(bar)	Ports
HDF2-ES-1LL	20	250	A,B: side for AMF P,T:3/8" BSP
HDF2-ES-OML	20	250	A,B: side for AMF P,T:3/8" BSP
HDF2-ES-OC	20	250	A,B: side for AMF P,T:3/8" BSP
HDF2-ES-1C	20	250	A,B: side for AMF P,T:3/8" BSP
HDF2-ES-3C	20	250	A,B: side for AMF P,T:3/8" BSP
HDF2-ES-4C	20	250	A,B: side for AMF P,T:3/8" BSP

To be combined with function modules AMF (A,B ports on side, top plugged)

COILS for HDF-ES/HDF2-ES solenoid operated directional valves

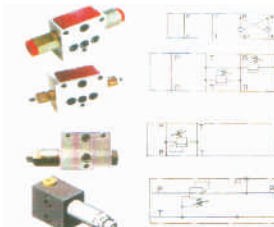


Kod	Voltage
B01-012C	12V DC
B01-024C	24V DC
Kod	Voltage
B01-110R	115V RAC(*)
B01-22R	230V RAC(*)

Electrical connection through standard ISO 4400 plugs (see page 5)

STACKABLE FUNCTIONS for HDF\*-ES valves

AMF modules (for HDF/HDF2)



Kod	Description
AMF-CP-AB	Check valve on A and B, pilot operated
AMF-MO-BA	Relief valve on B and A, direct acting
AMF-MOP-CC	Relief valve on P direct acting
AMF-RO-P/6,3	Direct operated pressure reducing valve
AMF-MOP-EV20.*	Relief valve on P + electric by-pass (*) specify coil tension 12V 24V DC

IN-LINE type (for HDF)



Kod	Description
HFC-14	One-way flow control valve 1/4" BSP with rotating joint for easy assembly

Plates for HDF\*-ES valves



Kod	Description
AMF-PM-TP	Parallel/Series converter T1 to P2
PD1-03/32-5	Inlet starting plate (steel)
PD1-03/32-0	End closing plate (steel)
MAF-KIT-2	Mounting angle kit (2 brackets + 2 bolts + 2 washers)