



HAVA HAZIRLAYICI ÜNİTELER

Model	AFC 2000	AFR 2000	AF 2000	AL 2000	AR 2000	BFC 4000	BFR 4000	BF 4000	BL 4000	BR 4000
-------	----------	----------	---------	---------	---------	----------	----------	---------	---------	---------

Operating Fluid	Air										
Joint Pipe Bore	1/4"					1/2"					
Filter Precision	40 micron										
Range of Adj. pressure	0,005 - 0,85 MPa				0,05 - 0,85 MPa			0,05 - 0,85 MPa			
Max. Adj. Pressure	0,95 MPa					0,95 MPa			0,95 MPa		
Ensured Press. Resist.	1,5 MPa										
Operating Temp. Range	5 - 60 °C										
Capacity of Filter Cup	15 cc.				60 cc.						
Capacity of Oil Feed Cup	25 cc.				25 cc.	90 cc.				90 cc.	
Weight	0,5 kg.	0,26 kg.	0,14 kg.	0,17 kg.	0,20 kg.	0,7 Kg.	0,4 kg.	0,33 kg.	0,25 kg.	0,23 kg.	



HOW TO ORDER

BFC 4000

↓
AFC : Model
BFC : Model
1500 : G1/8"
2000 : G1/4"
3000 : G3/8"
4000 : G1/2"

HOW TO ORDER

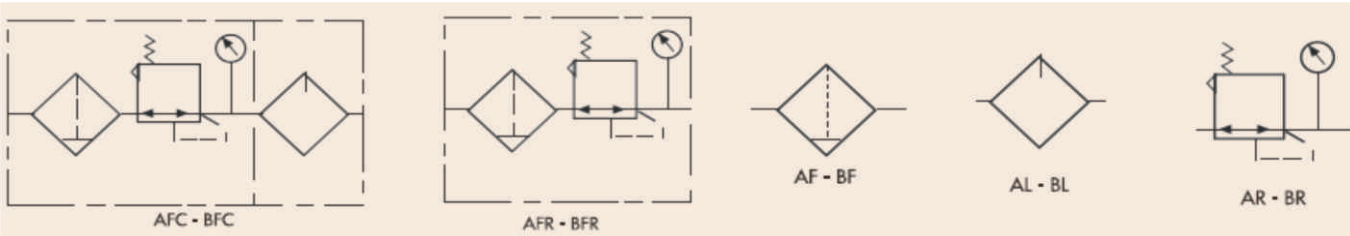
AF 2000

↓
AF : Filter
AR : Regulator
AFR : Filter+Regulator
AL : Lubricator
1500 : G1/8"
2000 : G1/4"

HOW TO ORDER

BF 4000

↓
BF : Filter
BR : Regulator
BFR : Filter+Regulator
BL : Lubricator
3000 : G3/8"
4000 : G1/2"

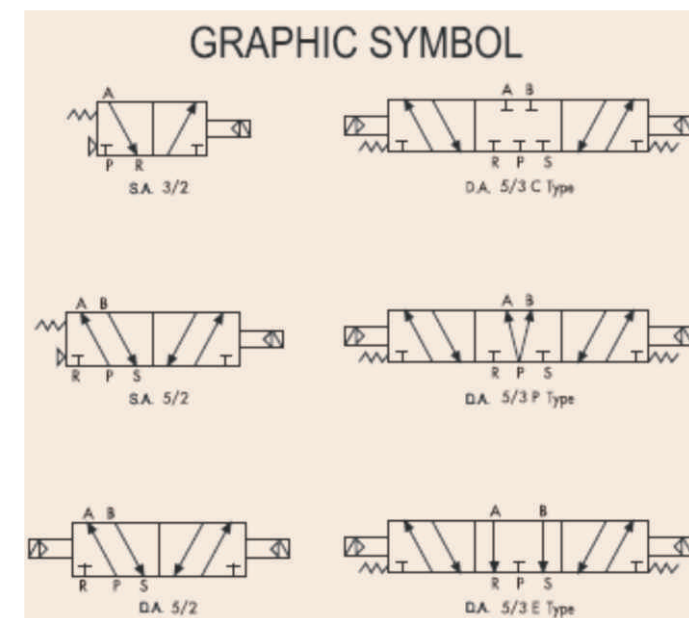
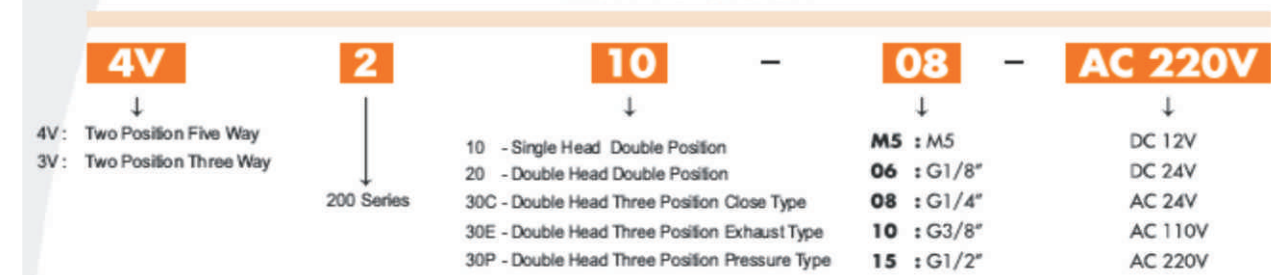




SOLENOID VALFLER

Model	4V210-08 3V210-08	4V220-08	4V230C-08 4V230E-08 4V230P-08
Effective Section Area	16mm. (CV=0.89)		
Joint Pipe Bore	G 1/4 Exhaust: G 1/8		
Working Medium	40 Micron Filtered Air		
Working Pressure	0.15 - 0.8 MPa		
Max.Pressure Resistance	1.2 MPa		
Operaing Temperature	5 - 50		
Voltaje Range	10%		
Power Consumption	AC:4.5VA DC:3W		
Hidhest Action Frequency	5 Cycle/Sec		
Shortest Excitation Time	0.05 Second		

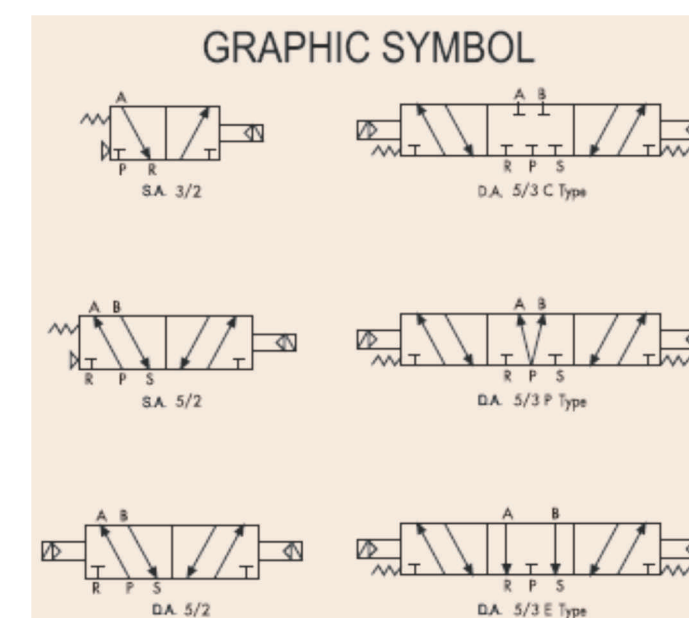
HOW TO ORDER



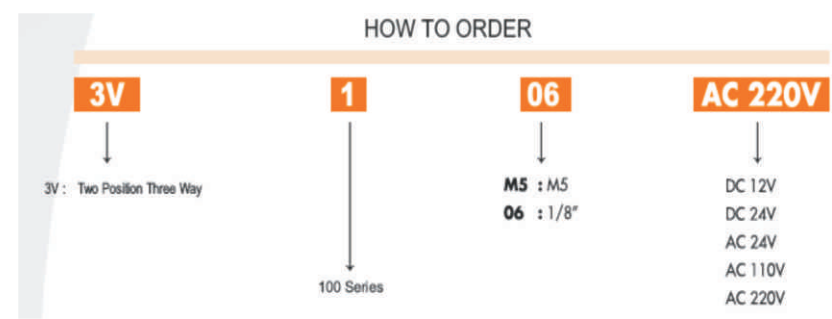
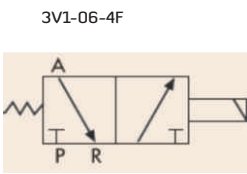
SOLENOID VALFLER

Model	4V410-15 3V410-15	4V420-15	4V430C-15 4V430E-15 4V430P-15
Effective Section Area	50mm. (CV=2.79)		30mm. (CV=1.68)
Joint Pipe Bore	G 1/2		
Working Medium	40 Micron Filtered Air		
Working Pressure	0.15 - 0.8 MPa		
Max.Pressure Resistance	1.2 MPa		
Operaing Temperature	5 - 50		
Voltaje Range	10%		
Power Consumption	AC:5.5VA DC:4.8W		
Hidhest Action Frequency	5 Cycle/Sec		
Shortest Excitation Time	0.05 Second		

HOW TO ORDER

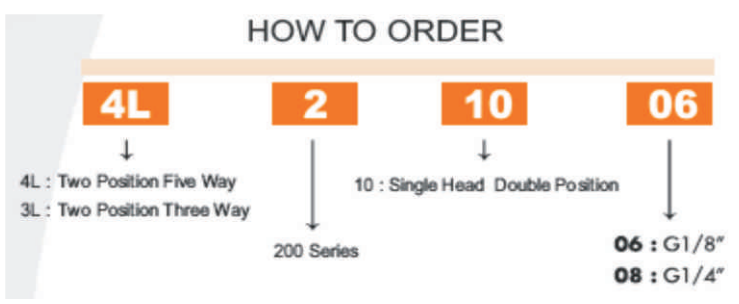
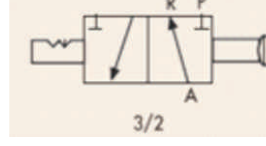
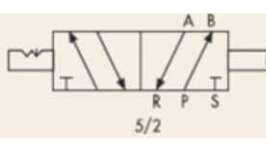
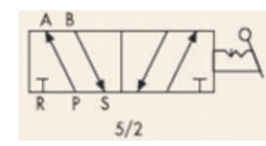


Model	3V1-M5	3V1-06
Motion Pattern	Direct Drive Type	
Joint Pipe Bore	M5	1/8
Working Medium	40 Micron Filtered Air	
Working Pressure	0 -0.8 MPa	
Max.Pressure Resistance	1.2 MPa	
Operaing Temperature	5 - 60	
Voltaje Range	10%	
Power Consumption	AC:5.5VA DC:4.8W	
Hidhest Action Frequency	10 Cycle/Sec	
Shortest Excitation Time	0.05 Second	
Material of Body	Aluminyum Alloy	
Air Outlet Diameter	1.0 mm.	



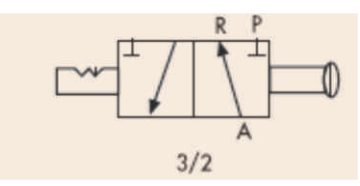
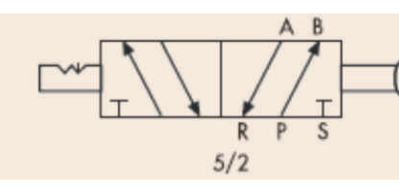
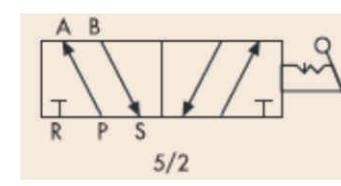
ÇEKME Lİ VALFLER

Model	3L210-08	4L210-08
Position Number	Two positon -Three way	Two positon - Five way
Effective Sectional Area	16 mm (CV=0,89)	
Working Medium	40 Micron Filtered Air	
Working Pressure Range	0-0.8 MPa	
Operaing Temperature Range	0-60	



Model	4H210-06	4H210-08	4H230-08	4H310-08	4H310-10	4H410-15	4H430-15
-------	----------	----------	----------	----------	----------	----------	----------

Position Number	Two positon Five Way		There Position Five Way	Two Position Five Way			
Effect.Sect.Area	14mm. (CV=0,78)	16mm. (CV=0,89)	12mm. (CV=0,67)	25mm. (CV=1,4)	30mm.(CV=1,68)	50mm. (CV=2,7)	
Working Medium	40 micron						
Working Pressure	0 - 0,8 MPa						
Operaing Temp.	0- 60°C						

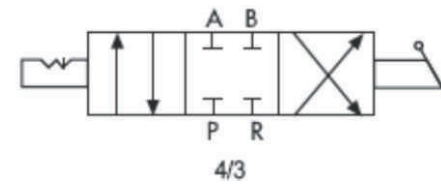


EL KONT.VALFLER

HOW TO ORDER



GRAPHIC SYMBOL



Model	HV400-02	HV400-03	HV400-04
Working Medium	40 Micron Filtered Air		
Joint Pipe Bore	G 1/4	G 3/8	G 1/2
Effective Sectional Area	30 mm. (CV=1.68)		
Working Pressure	0 - 0,8 MPa		
Operating Temperature	0-60°C		

PNÖMATİK BASINÇ ANAHTARI

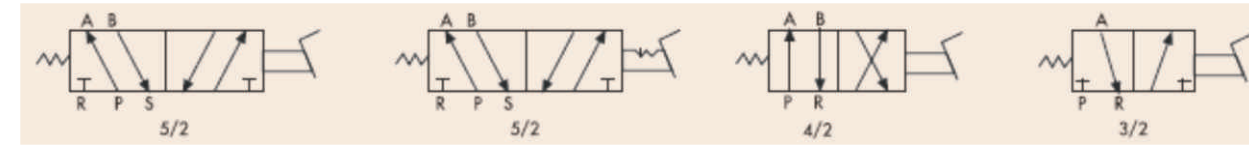


TEKNİK ÖZELLİKLER

Model	PSW - PP - A3
Çalışma Basıncı	0.5 - 12 Bar
Max. Voltaj	5A 125-250 VAC
Pozisyon	NC / NA
Giriş	1/8"

PEDAL VALFLER

Model	4F210-08	4F210-08L	4F210-08G	4F210-08LG	FV420	FV320
Position No	Two position five way			Two position four way	Two position three way	
Working Medium	40 micron					
Working Pressure	0 - 0,8 MPa					
Operating Temperature Range	0- 60°C					



4F210-08G



4F210-08

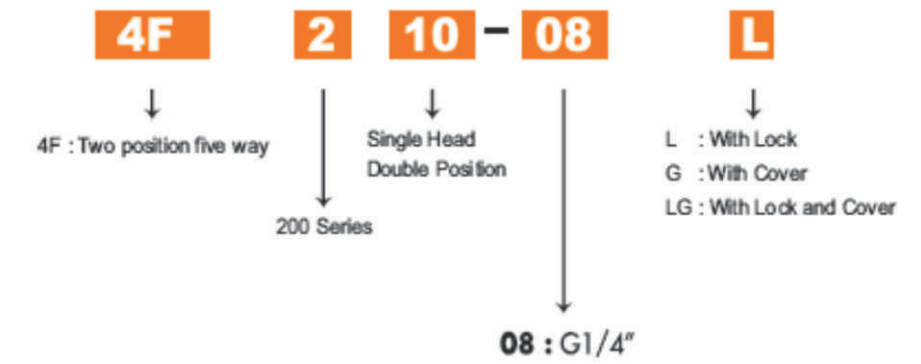


FV320



FV420

HOW TO ORDER



HOW TO ORDER



MEKANİK BUTON VALFLER

Model	MSV86321	MS86522	MSV98322
Position No	Three way two position	Five way two position	Three way two position
Effective Section Area	12mm. (CV=0,67)	16mm. (CV=0,89)	
Working Medium	40 micron		
Working Pressure	0-0,8 MPa		
Operating Temperature Range	0- 60°C		

HOW TO ORDER

MSV

Mechanical Valve

86

86 : Series
98 : Series

32

32 : Three way two position
52 : Five way two position

1

1 : G1/8"
2 : G1/4"

R

R : Roller
TB : Selective Knob
LB : Strengthened Knob
PB : Large Round Button
PP : Plat Round Button
PPL : Convex Round Button
EB : With Lock Button



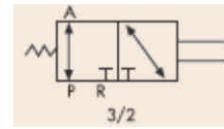
MSV 86321R



MSV 86321PP



MSV 86321EB



3/2 5/2



MSV 86522



MSV 86522EB



MSV 86522LB



MSV 86522TB



MSV 86522PP



MSV 86522PB



MSV 86522PPL



MSV 86522R



MSV 98322



MSV 98322EB



MSV 98322LB



MSV 98322TB



MSV 98322PP



MSV 98322PB



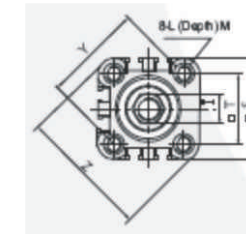
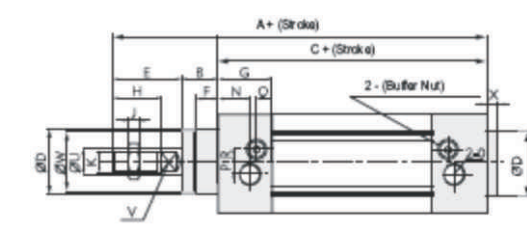
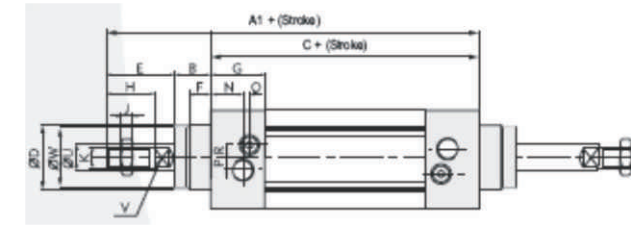
MSV 98322PPL



MSV 98322R

PNÖMATİK SİLİNDİRLER (ISO6431 VDMA24562)

Bore	32	40	50	63	80	100	125
Fluid	Air						
Working Voltage Range	1-9,0 kgf/cm						
Mak.Pressure Resistance	13,5 kgf/cm						
Working Temperature Range	0-70°C						
Working Speed Range	50-800 mm/sec						
Connection measure	G 1/8"	G 1/4"	G 1/4"	G 3/8"	G 3/8"	G 1/2"	G 1/2"



HOW TO ORDER

RIC

RIC: Aluminum Body
RICD Double Rod

D

D Double Shaft Double Action

50x50

Cylinder Bore

S

Stroke

FB

Magnet

LB : Front and back fixed type
FA : Front cover fixed type (Front Flange Type)
FB : Back cover fixed type (Rear Flange Type)
CA : Back cover fixed type (Single Earing)
CB : Back cover fixed type (Double Earing)
RC : Rod Clevis

RICD



Bore (mm)	A	A1	A2	B	C	D	E	F	G	H	I	J	K	L
32	142	190	185	16	94	30	32	10	25	22	17	6	M10 X 1.25	M6
40	159	213	207	20	105	35	34	10	29.5	24	17	7	M12 X 1.25	M6
50	175	244	233	27	106	40	42	10	32	32	23	8	M16 X 1.5	M8
63	190	258	247	26	122	45	42	10	36	32	23	8	M16 X 1.5	M8
80	214	301	288	35	127	45	52	10	37	40	26	10	M20 X 1.5	M10
100	229	321	308	40	137	55	52	10	39	40	26	10	M20 X 1.5	M10

Bore (mm)	M	N	O	P	Q	R	S	T	U	V	W	X	Y	Z	Z1
32	12	15	G1/8	5	3	6.5	45	32.5	12	10	28	4	46	58.7	21
40	12	17.5	G1/4	7	3	7	52	38	16	13	33	4	53.7	68	21
50	12	21	G1/4	7	3	9	65	46.5	20	17	38	4	65.8	84.5	23
63	12	23	G3/8	8	5	9	76	56.5	20	17	40	4	79.9	99.6	23
80	15	24	G3/8	10	5	12	94	72	25	22	43	5	101.8	123.8	29
100	15	26	G1/2	10	5	14	112	89	25	22	47	6	125.9	148.9	29

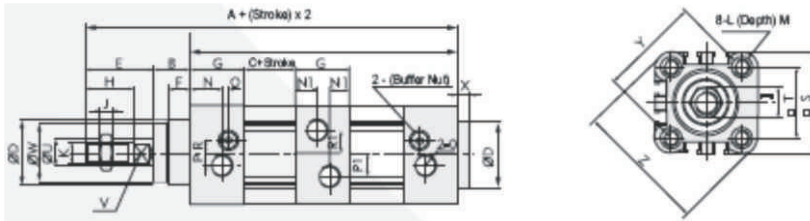
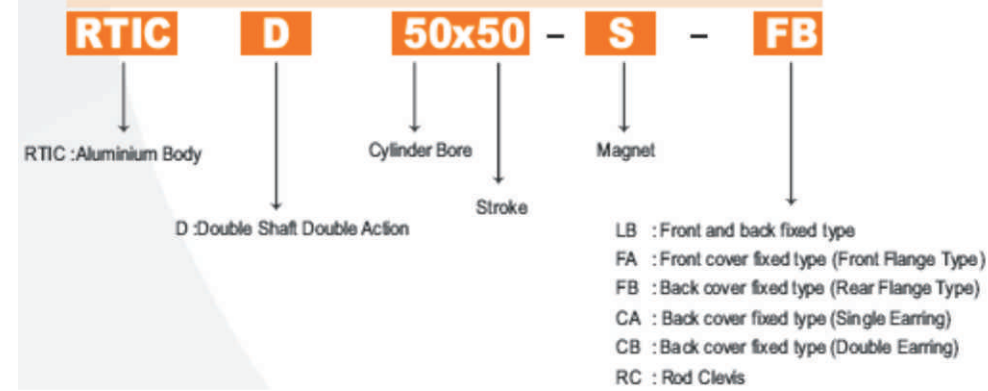
TANDEM SİLİNDİRLER (ISO6431 VDMA24562)

Bore	32	40	50	63	80	100	125
Fluid	Air						
Working Voltage Range	1-9,0 kgf/cm						
Mak.Pressure Resistance	13,5 kgf/cm						
Working Temperature R.	0-70°C						
Working Speed Range	50-800 mm/sec						
Connection measure	G 1/8"	G 1/4"	G 1/4"	G 3/8"	G 3/8"	G 1/2"	G 1/2"

Bore (mm)	A	B	C	D	E	F	G	H	I	J	K	L
32	209	16	42	30	32	10	25	22	17	6	M10x1.25	M6
40	234.5	20	46	35	34	10	29.5	24	17	7	M12x1.25	M6
50	253	27	46	40	42	10	32	32	23	8	M16x1.5	M8
63	276	28	50	45	42	10	36	32	23	8	M16x1.5	M8
80	307	35	56	45	52	10	37	40	26	10	M20x1.5	M10
100	328	40	68	55	52	10	39	40	26	10	M20x1.5	M10
125	389	45	79.5	60	74	12	45	54	40	12.5	M27x2	M12

Bore (mm)	M	N	O	P	Q	R	S	T	U	V	W	X	Y	Z	NI
32	12	15	G1/8	5	3	6.5	45	32.5	12	10	28	4	46	58.7	12.5
40	12	17.5	G1/4	7	3	7	52	38	18	13	33	4	53.7	68	14.75
50	12	21	G1/4	7	3	9	65	46.5	20	17	38	4	65.8	84.5	16
63	12	23	G3/8	8	5	9	76	56.5	20	17	40	4	79.9	99.6	18
80	15	24	G3/8	10	5	12	94	72	25	22	43	5	101.8	123.8	18.5
100	15	26	G1/2	10	5	14	112	89	25	22	47	6	125.9	148.9	19.5
125	20	31	G1/2	10.5	5	15	134	110	32	27	53.5	5	155	178	22.5

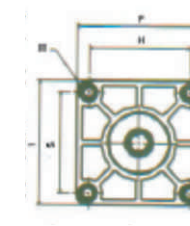
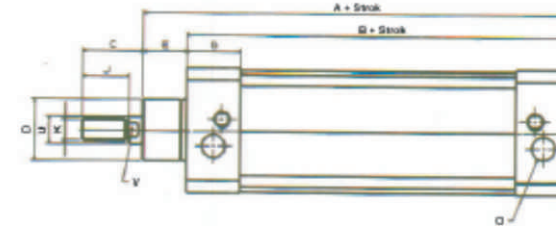
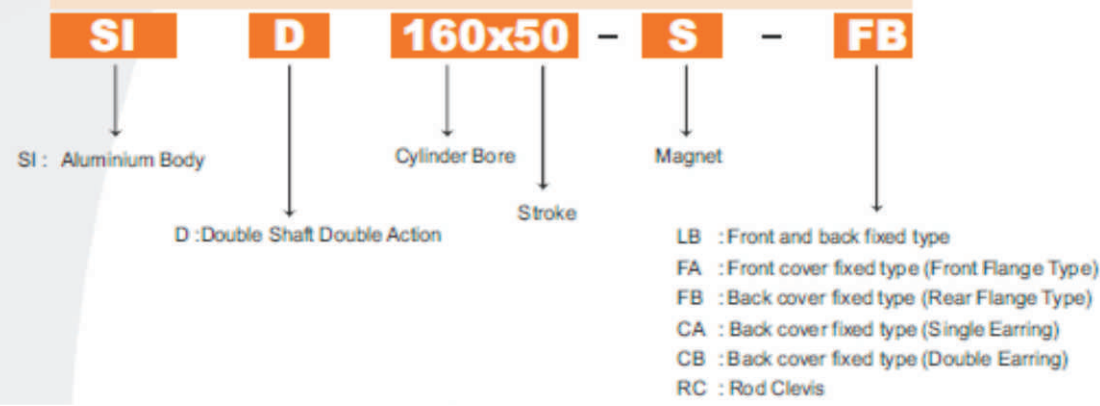
HOW TO ORDER



PNÖMATİK SİLİNDİRLER

Bore (mm)	A	B	C	D	E	F	G	H	I	J	K	M	O	S	U	V
160	242	184	94	65	58	180	52	140	179	72	M36*2	M16	G1/2	140	40	36

HOW TO ORDER



TANDEM SİLİNDİR

Daha fazla kuvvet ihtiyacınız olan alanlarda bu tip silindirler kullanılmaktadır. 160 mm çap silindirler içinde istenilen stoklarda üretim yapmaktayız.

İKİZ SİLİNDİR

Bu tip silindirler aynı çapta iki borudan oluştuğundan dolayı daha fazla kuvvet ve dönmez milli silindirler olarak kullanılır.

HİDRO PNÖMATİK SİLİNDİR

Hidro Pnömatik Silindirler özellikle Lineer hareket elde etmek ve hassas konumlama yapabilmek amacıyla kullanılırlar. Normal bir pistonda olduğu gibi titreşim yapmazlar ve düzgün bir ilerleme sağlarlar. İstenilen strok ve çaplarda üretim yapabilmekteyiz.

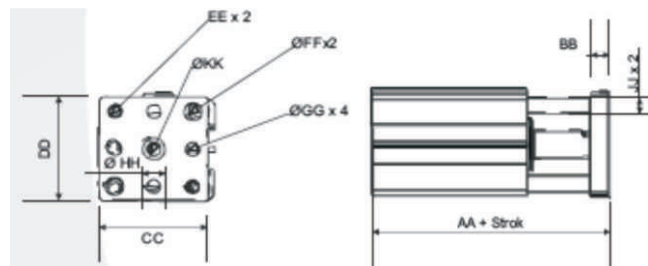
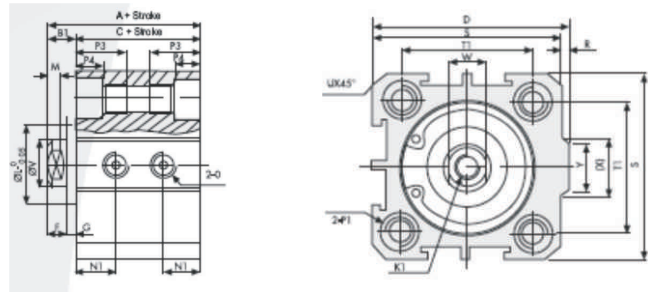
SHORT STROK TANDEM SİLİNDİR

Bu tip silindirlerde yine diğer tandem silindirler gibi daha fazla kuvvet istenilen alanlarda kullanılır. Ekstra avantajı daha kısa boyutlarda olmasıdır. 100 mm çapa kadar istenilen stoklarda üretebilmekteyiz.



KISA STROKLU YATAKLI SİLİNDİRLER

Q20mm
Q25mm
Q32mm
Q40mm
Q50mm
Q63mm



HOW TO ORDER



Bore	A	B1	C	D	E	F	G	K1	L	M	N1	N3	O
20	25	5.5	19.5	36	8	4	1.5	M4 x 0.7	16	2.8	7.5	-	M5 x 0.8
25	27	6	21	42	10	4	2	M5 x 0.8	17	2.8	8	-	M5 x 0.8
32	31.5	7	24.5	50	12	4	3	M6 x 1	22	2.8	9	-	G1/8
40	33	7	26	58.5	12	4	3	M8 x 1.25	28	2.8	10	-	G1/8
50	37	9	28	71.5	15	5	4	M10 x 1.5	38	2.8	10.5	-	G1/4
63	41	9	32	84.5	15	5	4	M10 x 1.5	40	2.8	11.8	-	G1/4

Bore	P1	P3	P4	R	S	T1	T2	U	V	W	X	Y		
20	Ø 6.5	M5 x 0.8	Ø 4.2	14	4.5	2	34	24	-	2.1	8	6	11.3	10
25	Ø 8.2	M6 x 1.0	Ø 4.6	15	5.5	2	40	28	-	3.1	10	8	12	10
32	Ø 8.2	M6 x 1.0	Ø 4.6	16	5.5	6	44	34	-	2.15	12	10	18.3	15
40	Ø 10	M8 x 1.25	Ø 6.5	20	7.5	6.5	52	40	-	2.25	16	14	21.3	16
50	Ø 11	M8 x 1.25	Ø 6.5	25	8.5	9.5	62	48	-	4.15	20	17	30	20
63	Ø 11	M8 x 1.25	Ø 6.5	25	8.5	9.5	75	60	-	3.15	20	17	28.7	20

Bore	AA	BB	CC	DD	EE	FF	GG	HH	JJ	KK
20	43	8	34	34	Ø5	Ø6	M5	Ø8	Ø4	Ø5
25	47	10	40	40	Ø5	Ø6	M5	Ø8	Ø6	Ø6
32	51.5	10	44	44	Ø5	Ø6	M5	Ø10	Ø6	Ø7
40	53	10	52	52	Ø5	Ø6	M5	Ø12	Ø8	Ø8.5
50	59	12	62	62	Ø6.5	Ø8	M6	Ø15	Ø8	Ø10.5
63	63	12	75	75	Ø6.5	Ø8	M6	Ø15	Ø8	Ø10.5



Mini SİLİNDİRLER

Bore	10	12	16	20	25
Fluid	Air				
Working Voltage Range	1-9,0 kgf/cm				
Mak.Pressure Resistance	13,5 kgf/cm				
Working Temperature Range	0-70°C				
Working Speed Range	50-800 mm/sec				
Joint Pipe Bore	M5*0,8			G 1/8"	

Bore	A	B	C	D	E	F	G	H	I	J	K	L
10	86	29	47	11	18	11	8.5	12	7	3	M4 x 0.7	M12 x 1.25
12	105	37	51	16	21	16	8.5	16	10	4	M6 x 1.0	M16 x 1.5
16	114	38	60	15	22	16	10	16	10	5	M6 x 1.0	M16 x 1.5
20	137	40	76	21	28	12	16	20	12	6	M8 x 1.25	M22 x 1.5
25	141	44	76	21	30	14	16	22	17	6	M10 x 1.25	M22 x 1.5

Bore	M	P	Q	R	S	U	V	W	X	AR	AU	AX
10	9	4	8	11	10	15	4	3	M5	7	19	21
12	14	6	12	16	15	20	6	5	M5	6	24	27
16	14	6	12	16	9	21	6	5	M5	6	24	27.5
20	10	8	16	19	12	27	8	6	G1/8	7	33	29
25	12	8	16	19	12	30	10	8	G1/8	7	33	29

HOW TO ORDER

