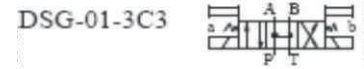
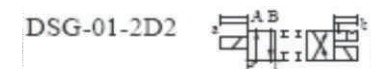
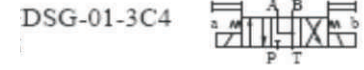
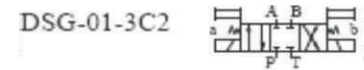
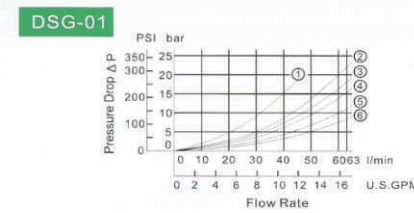




NG6 (1/4") BOBİNLİ YÖN KONTROL VALFLERİ (CETOP 3)

Tipi CETOP 3	Norm NG 6	Konum Spool Tipi	Voltaj DC-AC	Max. Debi lt/dk	Max. Basınç bar
DSG-2B2-N01-D12	1/4"	NG6 4/2 TB	12	30-60	315
DSG-2B2-N01-D24	1/4"	NG6 4/2 TB	24	30-60	315
DSG-2B2-N01-A220	1/4"	NG6 4/2 TB	220	30-60	315
DSG-3C2-N01-D12	1/4"	NG6 4/3 KM	12	30-60	315
DSG-3C2-N01-D24	1/4"	NG6 4/3 KM	24	30-60	315
DSG-3C2-N01-A220	1/4"	NG6 4/3 KM	220	30-60	315
DSG-3C3-N01-D12	1/4"	NG6 4/3 HM	12	30-60	315
DSG-3C3-N01-D24	1/4"	NG6 4/3 HM	24	30-60	315
DSG-3C3-N01-A220	1/4"	NG6 4/3 HM	220	30-60	315
DSG-3C4-N01-D12	1/4"	NG6 4/3 ABT	12	30-60	315
DSG-3C4-N01-D24	1/4"	NG6 4/3 ABT	24	30-60	315
DSG-3C4-N01-A220	1/4"	NG6 4/3 ABT	220	30-60	315
DSG-3C60-N01-D12	1/4"	NG6 4/3 AM	12	20-40	250
DSG-3C60-N01-D24	1/4"	NG6 4/3 AM	24	20-40	250
DSG-3C60-N01-A220	1/4"	NG6 4/3 AM	220	20-40	250
DSG-2D2-N01-D12	1/4"	NG6-4/2 TB DETANTLI	12	30-60	315
DSG-2D2-N01-D24	1/4"	NG6-4/2 TB DETANTLI	24	30-60	315

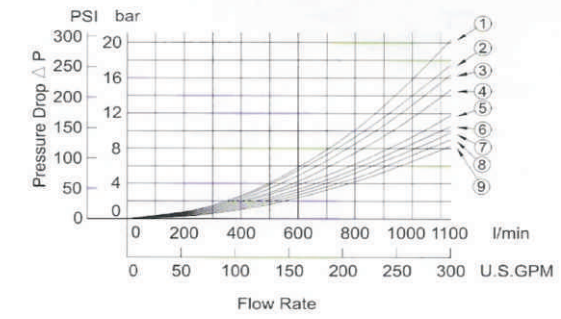


NG32 (1") VALF - GÖVDE (CETOP 10)

Tipi CETOP 10	Konum Spool Tipi	Max. Basınç Bar	Max. Debi lt/dk
DSHG-2B2-10-1P1D	NG32 TB GÖVDE	315	550-750
DSHG-3C2-10-1P1D	NG32 KM GÖVDE	315	550-750
DSHG-3C3-10-1P1D	NG32 HM GÖVDE	315	550-750
DSHG-3C4-10-1P1D	NG32 ABT GÖVDE	315	550-750
DSHG-3C60-10-1P1D	NG32 AM GÖVDE	315	400-600
DSHG-3C60-10-1P1D-C	NG32 AM GÖVDE-ÇEKİLİ	315	400-600



DSHG-10
DSHG-10-S



YEDEK VALF BOBİNLERİ

Tipi	NG 6-10 Voltaj	Q İç Çap (mm.)
DSG-N-01-NG6	(1/4) 110-220V AC BOBİN	19 mm.
DSG-N-01-NG6	(1/4) 12-24V DC BOBİN	19 mm.
DSG-N-03-NG10	(1/2) 110-220V AC BOBİN	26 mm.
DSG-N-03-NG10	(1/2) 12-24V DC BOBİN	26 mm.



NG6 MODÜLER BASINÇ AYAR VALFLERİ (CETOP 3)

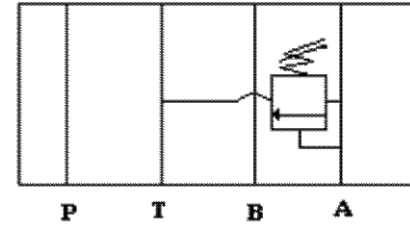
Tipi CETOP 3	Kontrol Pozisyonu	Bağlantı Norm	Max. Basınç Bar	Max. Debi lt/dk
MBP-01 H20	P HATTI	NG6	70-210	35
MBA-01 H20	A HATTI	NG6	70-210	35
MBB-01 H20	B HATTI	NG6	70-210	35
MBW-01 H20	AB HATTI (İkiz)	NG6	70-210	35

NG10 MODÜLER BASINÇ AYAR VALFLERİ (CETOP 5)

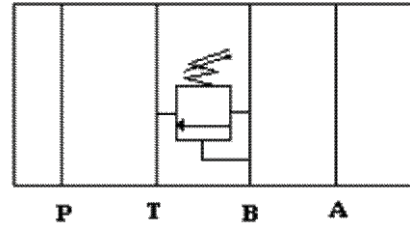
Tipi CETOP 5	Kontrol Pozisyonu	Bağlantı Norm	Max. Basınç Bar	Max. Debi lt/dk
MBP-03 H20	P HATTI	NG10	70-210	70
MBA-03 H20	A HATTI	NG10	70-210	70
MBB-03 H20	B HATTI	NG10	70-210	70
MBW-03 H20	AB HATTI (İkiz)	NG10	70-210	70



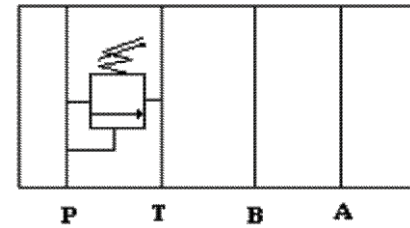
MBA-01 (03)



MBB-01 (03)



MBP-01 (03)



NG6 MODÜLER KİLİTLEME VALFLERİ (CETOP 3)

Tipi CETOP 3	Kontrol Pozisyon	Bağlantı Norm	Max. Basınç Bar	Max. Debi lt/dk
MPA-01-20	A HATTI	NG6	250	50
MPB-01-20	B HATTI	NG6	250	50
MPW-01 20	AB HATTI (İkiz)	NG6	250	50

NG10 MODÜLER KİLİTLEME VALFLERİ (CETOP 5)

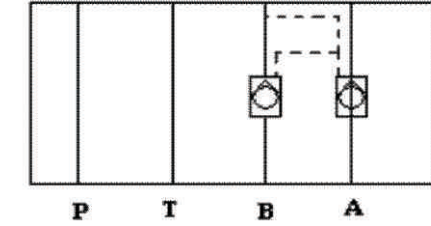
Tipi CETOP 5	Kontrol Pozisyon	Bağlantı Norm	Max. Basınç Bar	Max. Debi lt/dk
MPA-03-20	A HATTI	NG10	250	100
MPB-03 20	B HATTI	NG10	250	100
MPW-03 20	AB HATTI (İkiz)	NG10	250	100

NG16 & NG25 MODÜLER İKİZ KİLİTLEME VALFLERİ (CETOP 7 & 8)

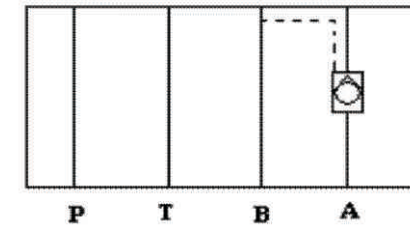
Tipi CETOP 7/8	Kontrol Pozisyon	Bağlantı Norm	Max. Basınç Bar	Max. Debi lt/dk
MPW-04 20	AB HATTI (İkiz)	NG16	250	190
MPW-06 20	AB HATTI (İkiz)	NG25	250	300



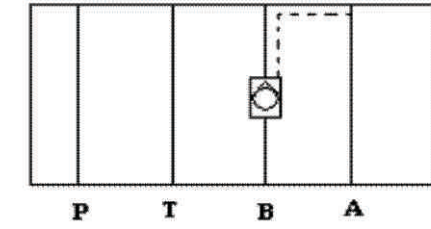
MPW-01 (03)



MPA-01 (03)



MPB-01 (03)

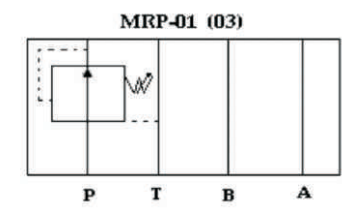
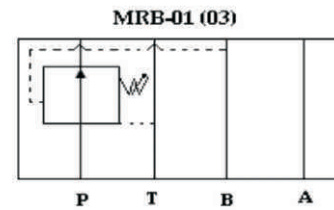
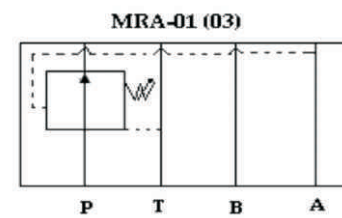
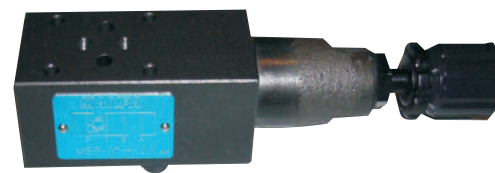


NG6 MODÜLER BASINÇ DÜŞÜRÜCÜ VALFLER (CETOP 3)

Tipi CETOP 3	Kontrol Pozisyonu	Bağlantı Norm	Max. Basınç Bar	Max. Debi lt/dk
MRA-01-H20	A HATTI	NG6	70-210	35
MRB-01-H20	B HATTI	NG6	70-210	35
MRP-01-H20	P HATTI	NG6	70-210	35

NG10 MODÜLER BASINÇ DÜŞÜRÜCÜ VALFLER (CETOP 5)

Tipi CETOP 5	Kontrol Pozisyonu	Bağlantı Norm	Max. Basınç Bar	Max. Debi lt/dk
MRA-03 H20	A HATTI	NG10	70-210	50
MRB-03 H20	B HATTI	NG10	70-210	50
MRP-03 H20	P HATTI	NG10	70-210	50

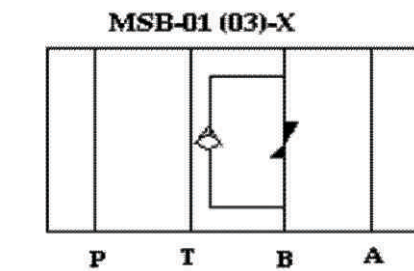
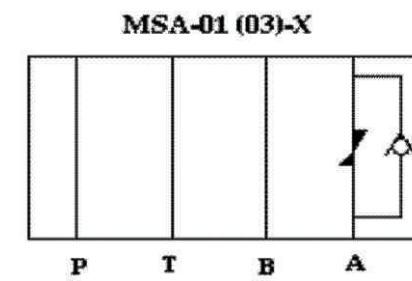
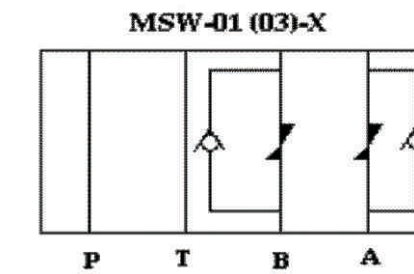


NG6 MODÜLER DEBİ (HIZ) AYAR VALFLERİ (CETOP 3)

Tipi CETOP 3	Kontrol Pozisyon	Bağlantı Norm	Max. Basınç Bar	Max. Debi lt/dk
MSA-01 X20	A HATTI	NG6	250	35
MSB-01 X20	B HATTI	NG6	250	35
MSW-01 X20	AB HATTI (İkiz)	NG6	250	35

NG10 MODÜLER (Hız) DEBİ AYAR VALFLERİ (CETOP 5)

Tipi CETOP 5	Kontrol Pozisyon	Bağlantı Norm	Max. Basınç Bar	Max. Debi lt/dk
MSA-03 X20	A HATTI	NG10	250	70
MSB-03 X20	B HATTI	NG10	250	70
MSW-03 X20	AB HATTI (İkiz)	NG10	250	70



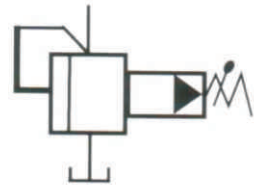
NG 16 BASINÇ AYAR & Sıfırlamalı BASINÇ AYARLAR (CETOP 7)

Tipi	Kontrol Pozisyon	Bağlantı Norm	Max.Basınç Bar	Max Debi lt./dk.
CETOP 7				
SBG-03 H20	Manuel	NG16	250	100
SBSG-03 H20	Elektrikli	NG16	250	100

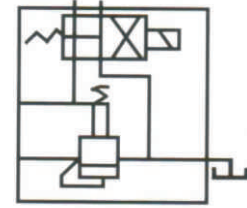
NG 25 BASINÇ AYAR & Sıfırlamalı BASINÇ AYARLAR (CETOP 8)

Tipi	Kontrol Pozisyon	Bağlantı Norm	Max.Basınç Bar	Max Debi lt./dk
CETOP 8				
SBG-06 H20	Manuel	NG25	250	200
SBSG-06 H20	Elektrikli	NG25	250	200

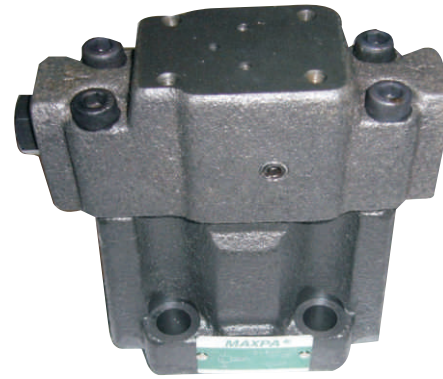
*Pilot Valf Dahil Değildir



Basınç Ayar
SBG



SBSG
Sıfırlamalı Bas.Ayar

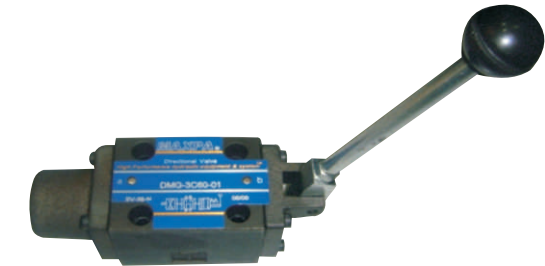
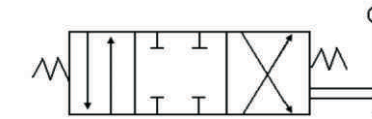


NG6 MANUAL (Kol) KUMANDA VALFLERİ MAX. 315 BAR

Tipi	Bağlantı/Diş Ölçüsü	Debi (lpm)
DMG-01-2B2-20	NG6 TB Konum (Spring)	63lpm.
DMG-01-3C2-20	NG6 KM Konum (Spring)	63lpm.
DMG-01-3C4-20	NG6 ABT Konum (Spring)	63lpm.
DMG-01-3C60-20	NG6 AM Konum (Spring)	63lpm.

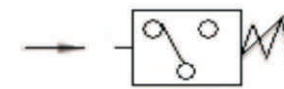
NG10 MANUAL (Kol) KUMANDA VALFLERİ MAX. 315 BAR

Tipi	Bağlantı/Diş Ölçüsü	Debi (lpm)
DMG-03-2B2-20	NG10 TB Konum (Spring)	120 lpm.
DMG-03-3C2-20	NG10 KM Konum (Spring)	120 lpm.
DMG-03-3C4-20	NG10 ABT Konum (Spring)	120 lpm.
DMG-03-3C60-20	NG10 AM Konum (Spring)	120 lpm.



BASINÇ ŞALTERLERİ

Tipi	Bağlantı/Diş Ölçüsü
DNA-100K-22B	1/4 BAS. ŞALTERİ (15-100 Bar)
DNA-250K-22B	1/4 BAS. ŞALTERİ (40-250 Bar)
DNA-360K-22B	1/4 BAS. ŞALTERİ (50-360 Bar)
DNC-150K-22B	1/4 BAS. ŞALTERİ (30-150 Bar)

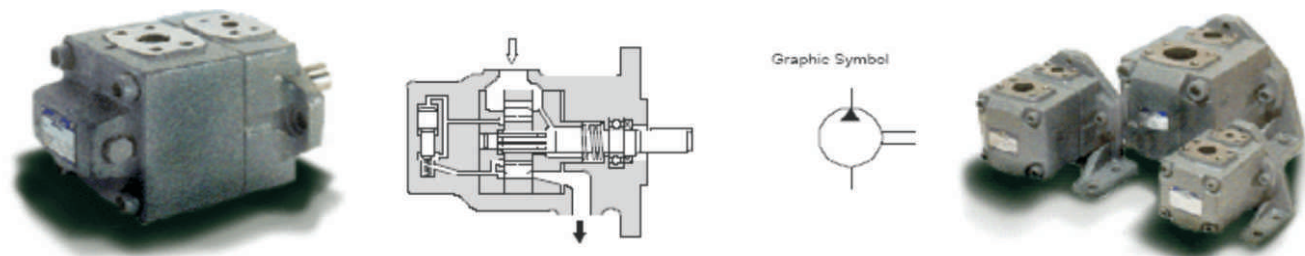


PALETLİ POMPALAR (HQ)

Cinsi	Depl.		Max. Hız bar	Max. Basınç lt/dak
	cc/dev.	Galon/dev.		
HQ15-06	6,2	0,38	1200-1800	210
HQ15-08	8,1	0,49	950-1800	210
HQ15-11	11,2	0,68	950-1800	245
HQ15-14	14,3	0,87	950-1800	245
HQ15-17	17,1	1,04	950-1800	245
HQ15-19	19,2	1,17	950-1800	245
HQ15-23	23,3	1,42	950-1800	245
HQ15-26	26,1	1,6	950-1800	245
HQ15-31	31,1	1,91	950-1500	245

HQ25-26	26,2	1,61	950-1800	245
HQ25-32	32,1	1,97	950-1800	245
HQ25-38	38,2	2,34	950-1800	245
HQ25-43	43,2	2,64	950-1800	245
HQ25-52	52,3	3,19	950-1800	245
HQ25-60	60,2	3,67	950-1800	210
HQ25-65	65,3	3,99	950-1800	210
HQ25-75	75	4,58	950-1500	175

HQ35-60	60,3	3,68	900-1800	210
HQ35-66	66,4	4,05	900-1800	210
HQ35-76	76,3	4,66	900-1800	210
HQ35-82	82,2	5,02	900-1800	210
HQ35-88	88,3	5,39	900-1800	210
HQ35-94	94,5	5,77	900-1800	210
HQ35-108	108,2	6,6	900-1800	210
HQ35-116	116,1	7,09	900-1800	175
HQ35-125	124,5	7,6	900-1500	175



MEKANİK BASINÇ REGÜLASYONLU DEĞİŞKEN DEBİLİ PALETLİ POMPALAR

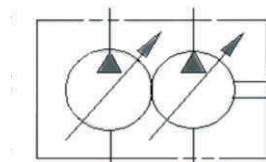
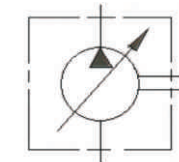
Cinsi	Deplasman cc/dev	Min-Max Hız dev/dak	Max. Basınç bar
PVF-12-070	6,6	800-1800	50-70
PVF-20-070	11,1	800-1800	50-70
PVF-30-070	16,6	800-1800	50-70
PVF-40-070	22,2	800-1800	50-70

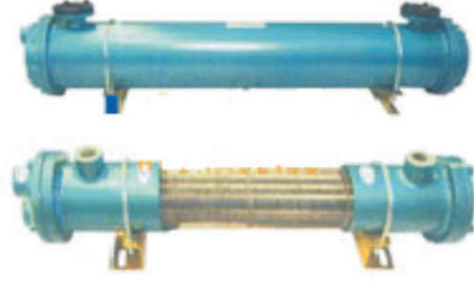
TANDEM TİP MEKANİK BASINÇ REGÜLASYONLU DEĞİŞKEN DEBİLİ PALETLİ POMPALAR

Cinsi PVDF	Pompa Tipi	Deplasman cc/dev	Min-Max Hız dev/dak	Max. Basınç bar
PVDF-20+20-070	Tandem	11,1+11,1	800-1800	50-70
PVDF-30+30-070	Tandem	16,6+16,6	800-1800	50-70
PVDF-40+40-070	Tandem	22,2+22,2	800-1800	50-70

ÖN UYARILI BASINÇ REGÜLASYONLU DEĞİŞKEN DEBİLİ PALETLİ POMPALAR

Cinsi	Pompa Tipi	Deplasman cc/dev	Min-Max Hız dev/dak	Max. Basınç bar
VP5F-A-5	-	16,6	800-1800	70-140
VP5F-B-3	-	22,2	800-1800	20-70
VP5FD-A-5-A-5	Tandem	16,6+16,6	800-1800	70-140
VP5FD-B-3-B-3	Tandem	22,2+22,2	800-1800	20-70





OIL COOLER / SULU YAĞ SOĞUTUCULAR (EŞANJÖR)

Model	Bağlantı/Dış Ölç.	L/Min.	Kcal/h 30C
OR-60L	3/4'	60	7000
OR-100L	3/4'	100	12000
OR-150L	1'	150	19000
OR-250L	1'	250	30000
OR-350L	1'	350	40000
OR-600L	1-1/4'	600	62000
OR-800L	1-1/4'	800	90000
OR-1000L	1-1/4'	1000	110000
OR-1200L	2'	1200	130000
OR-1400L	2'	1400	150000

Model	A mm (in)	B mm (in)	C mm (in)	QD mm (in)	QE mm (in)	F mm (in)	G mm (in)
OR-60L	460 (18.1)	295 (11.6)	40 (1.57)	89.1 (3.50)	120 (4.72)	3/4"	3/4"
OR-100L	542 (21.3)	370 (14.5)	40 (1.57)	114.3 (4.50)	120 (4.72)	3/4"	3/4"
OR-150L	573 (22.5)	375 (14.7)	75 (2.95)	139.8 (5.50)	170 (6.69)	1 1/4"	3/4"
OR-250L	800 (31.4)	600 (23.6)	75 (2.95)	139.8 (5.50)	170 (6.69)	1 1/4"	3/4"
OR-350L	1198 (47.1)	1000 (39.3)	75 (2.95)	139.8 (5.50)	170 (6.69)	1 1/4"	3/4"
OR-600L	1215 (47.8)	970 (38.1)	86 (3.38)	165.2 (6.50)	196 (7.71)	2"	1 1/2"
OR-800L	1715 (67.5)	1470 (57.8)	86 (3.38)	165.2 (6.50)	196 (7.71)	2"	1 1/2"
OR-1000L	2135 (84.0)	1890 (74.4)	86 (3.38)	165.2 (6.50)	196 (7.71)	2"	1 1/2"

